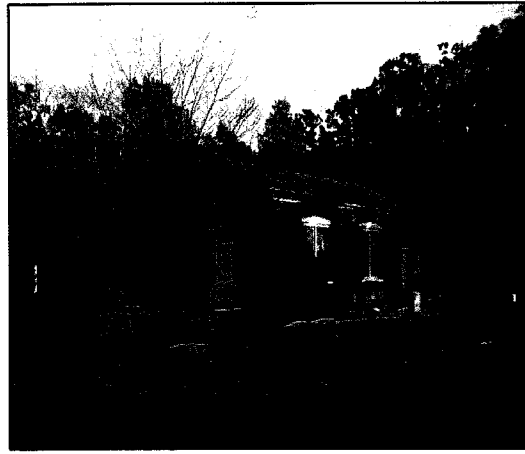


Welcome to St. Luke's Episcopal Church



The St. Luke's Historical Society invites you into our lovely little church, to sit for a while and to meditate if you wish. We also encourage you to take the short walk around the church and to look at some of the historic old tombstones, reminders of former friends and family members.

As you walk through the cemetery, you might want to take notice of some special markers.

- ⑩ WILLIAM HENRY HARRISON. Not the president, but a county resident who oversaw the construction of St. Luke's Church, beginning in 1843. Mr. Harrison, who lived at "Middlesex," had served in the British Army and had fought against Napoleon at the Battle of Waterloo
- ⑩ THE PICKRELL MONUMENT. Members of the Pickrell family, who formerly resided at "Millwood Plantation," erected this tall monument in memory of Col. James McCaw Pickrell, Jesse Chapman, Mary Eva, and Percy.
- ⑩ COLONEL WILLIAM WOOD FINNEY of "Elioch" achieved national fame when he established the Pony Express to speed delivery of mail in 1860 between St. Louis and Sacramento, California.
- ⑩ CHARLES CARTER LEE. 1798-1871. Brother of Gen. Robert E. Lee, lived and owned nearby "Windsor Farm" at Fine Creek. Certainly not as famous as his brother, Charles Carter Lee invited Gen. Lee to spend his last night after Appomattox at "Windsor." Gen. Lee declined the invitation, saying he wanted to spend it "under tents" with his troops as they returned to Richmond. There is a Civil War Trails sign to mark the area where Gen. Lee and his men watered

their horses in Fine Creek and spent the night along Huguenot Trail.

&&&&&

If you have questions about the cemetery, ask a member of St. Luke's Historical Society Committee:

Suzanne Day

Joyce Evans, Flag Day Chairman

Betty Handy

Connie Kennon Harriss

Dan Jones

The Rev. Sandi Kerner

Dr. Steve Larrick

Tammy Rogers

Pauline A. Mitchell: 794-5831

The committee would like interesting information about your family members buried in St. Luke's Cemetery, such as copies of photographs or wedding announcements. If you would like to a Lifetime Family Membership, send a check for \$100 to St. Luke's Historical Society at St. Luke's Church, to help with postage, printing and preservation of cemetery records.

We honored our Fathers last Father's Day with a successful recognition of beloved fathers buried in our cemetery. We plan to have another ceremony honoring our veterans in November. Make sure we know about your family member who was a veteran.

&&&&&

St. Luke's Episcopal Church

2245 Huguenot Trail

Powhatan, VA 23139

(804) 794-6953

stlukeepiscopalpowhatan@gmail.com

www.stlukespowhatan.org